

Carol TR



Treuil manuel à engrenages Manual geared winch

150 kg - 300 kg - 500 kg - 1000 kg - 2000 kg

Notice d'emploi et d'entretien Operating and maintenance instructions

| | |
|--|----|
| 1. Introduction | 2 |
| 2. Mise en service / Installation | 3 |
| 2.1. Recommandations / Important operating advice | 3 |
| 2.2. Mise en place, fixation du treuil / Mounting the winch | 3 |
| 3. Câble / Wire rope | 4 |
| 3.1. Sens d'enroulement du câble / Wire rope reeling | 4 |
| 4. Débrayage / Wire rope release | 5 |
| 5. Manivelle / Operating handle | 5 |
| 6. Graissage des engrenages / Lubrication of the gears | 5 |
| 7. Vues éclatées / Exploded views and spare parts | |
| 7.1. Vue éclatée Carol TR 150 Spare parts view Carol TR 150 | 6 |
| 7.2. Vue éclatée Carol TR 300-500 Spare parts view Carol TR 300-500 | 7 |
| 7.3. Vue éclatée Carol TR 1000 Spare parts view Carol TR 1000 | 8 |
| 7.4. Vue éclatée Carol TR 2000 Spare parts view Carol TR 2000 | 9 |
| Autres treuils et matériels TRACTEL Other winches and TRACTEL equipment | 10 |
| Les Sociétés du Groupe TRACTEL TRACTEL Group Companies | 11 |

1. Introduction

Les treuils à tambour CAROL TR sont compacts, maniables et sûrs .
Ils ont été conçus pour une grande variété d'utilisations :

- Multiposition de fixation
- Différentes sorties de câble
- Dispositifs de sécurité intégrés.

La résistance du treuil est prévue pour lever la charge indiquée sur l'appareil (capacité nominale).

CAROL TR drum winches are compact, easy to handle and safe. They have been designed for a wide variety of applications, and have :

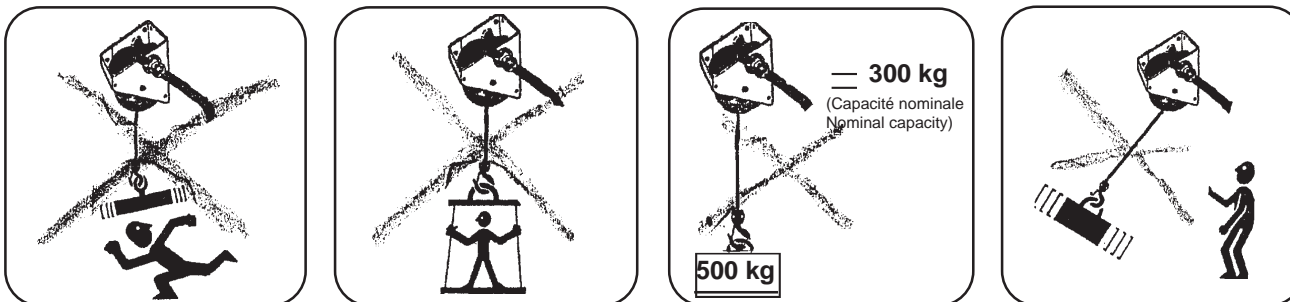
- multiple anchor positions,
- a choice of wire rope exits, and
- integrated safety devices.

CAROL TR drum winches have been designed for lifting loads up to the nominal lifting capacity, indicated on the machine itself.

2. Mise en service / Installation

2.1. Recommendations / Important operating advice

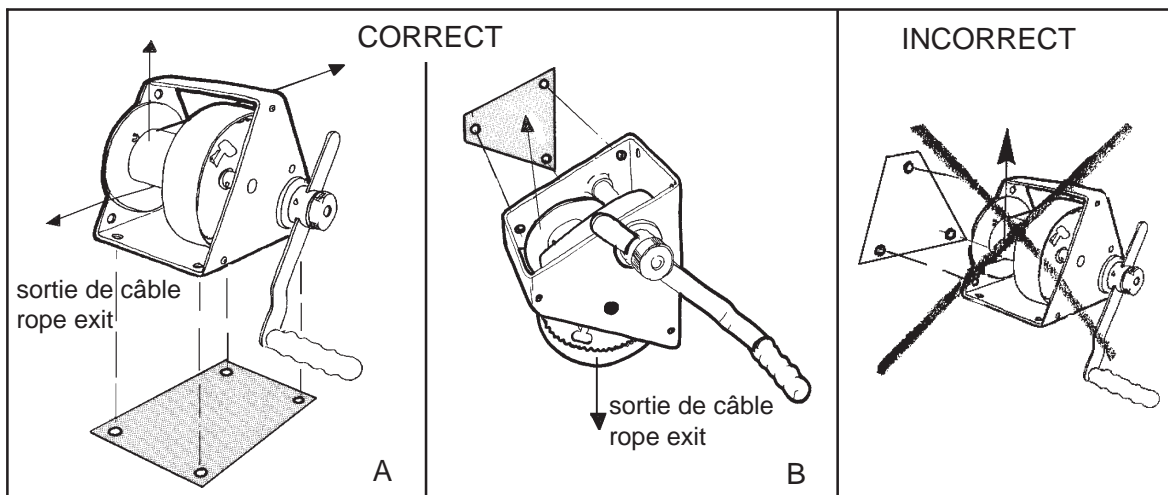
USAGES INCORRECTS / Incorrect usage



2.2. Mise en place, fixation du treuil CAROL TR / Winch mounting

Plan horizontal / 4 point horizontal mounting (Fig. A)

Plan vertical / 3 point vertical mounting (Fig. B)

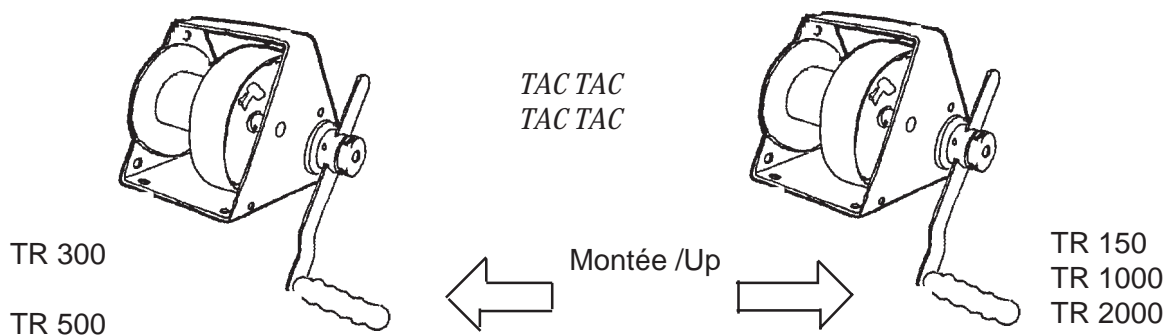


| | CORRECT | INCORRECT |
|---------|-----------------------------------|-----------------------------------|
| TR 150 | Vis/Screw x 4 \varnothing 9 mm | Vis/Screw x 3 \varnothing 9 mm |
| TR 300 | Vis/Screw x 4 \varnothing 13 mm | Vis/Screw x 3 \varnothing 13 mm |
| TR 500 | Vis/Screw x 4 \varnothing 13 mm | Vis/Screw x 3 \varnothing 13 mm |
| TR 1000 | Vis/Screw x 4 \varnothing 17 mm | |
| TR 2000 | Vis/Screw x 4 \varnothing 21 mm | |

3. CABLE / Wire rope

| Modèle/Model | ø mm | Capacité maxi. Max. capacity | Nombre de couches Nb of w.rope layers |
|--------------|------|---------------------------------|--|
| TR 150 | 4 | 22 | 6 |
| TR 300 | 5 | 40 | 6 |
| TR 500 | 6,8 | 20 | 4 |
| TR 1000 | 9 | 35 | 4 |
| TR 2000 | 13 | 30 | 9 |

3.1. Sens d'enroulement du câble / Wire rope reeling

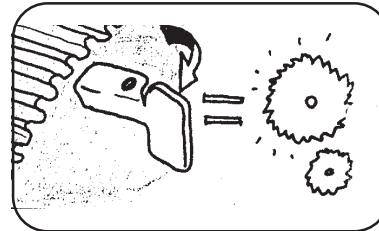
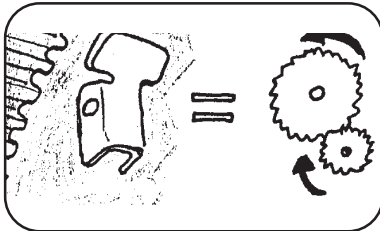
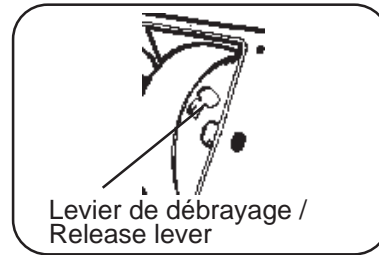


Un attache-câble permet de retenir l'extrémité du câble sur le tambour.
 A wire rope clamp allows the end of the wire rope to be secured to the drum.
 Tendre le câble et l'enrouler à spires jointes sur le tambour.
 With the wire rope slightly tensioned, reel it tightly onto the drum.

4. Débrayage / Releasing the wire rope

Débrayage : dévidage du câble à vide.
NE JAMAIS DEBRAYER EN CHARGE.

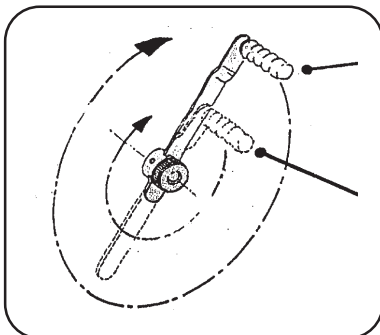
Before operating the release mechanism, ensure that there is no load on the wire rope.
NEVER ATTEMPT TO RELEASE THE WINCH WHEN UNDER LOAD.



5. Manivelle / Operating handle :

Longueur de manivelle réglable, pour disposer, soit d'une force maxi, soit d'un enroulement rapide.

The length of the operating handle is adjustable for maximum mechanical advantage or for fast reeling of the wire rope.



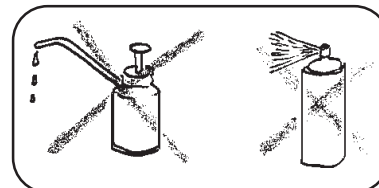
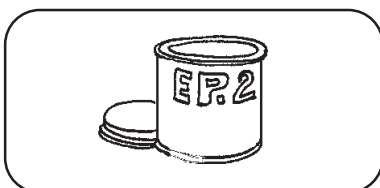
Force maximum
Maximum power

Enroulement rapide
Fast reeling

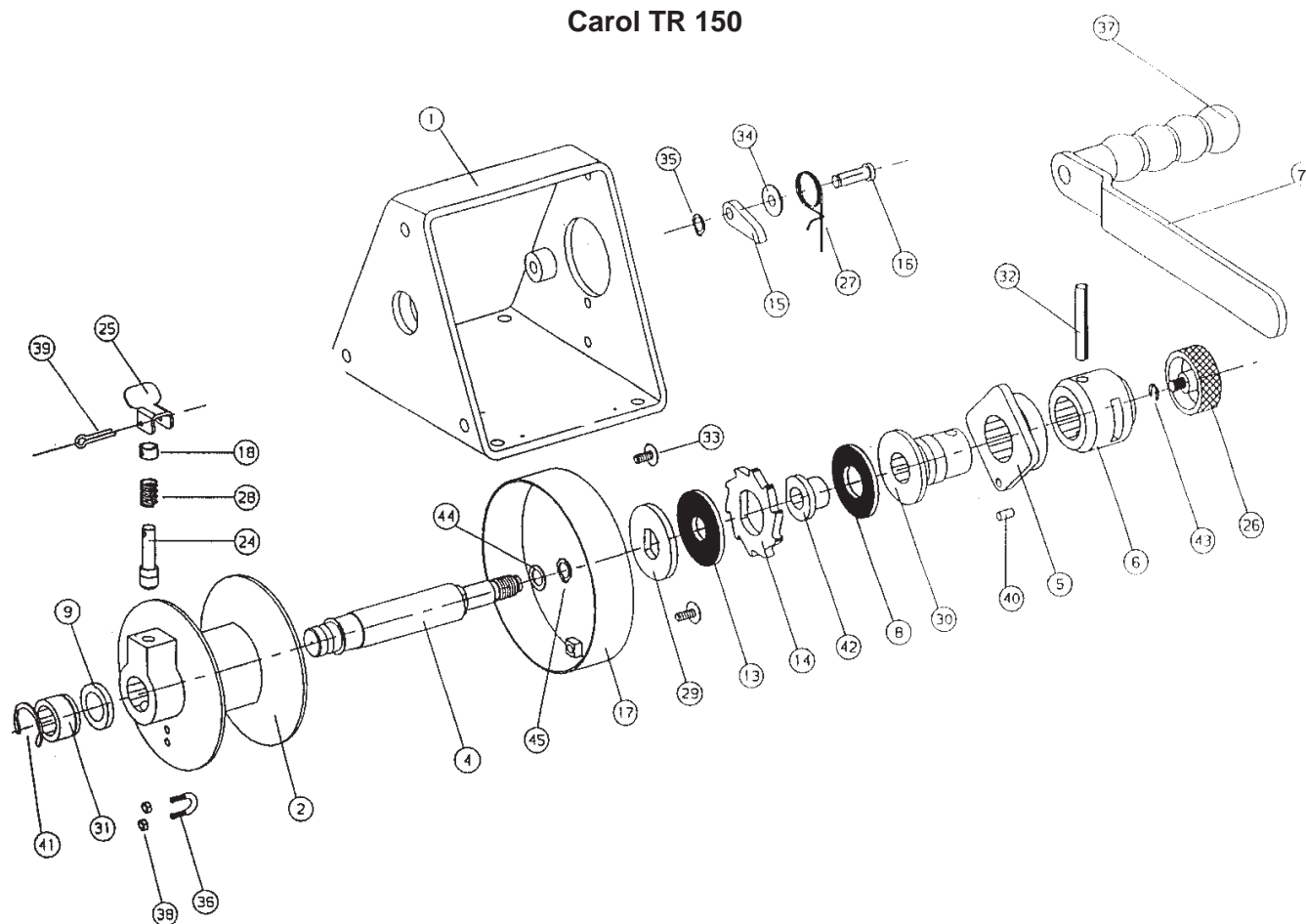
6. Graissage des engrenages / Lubrication of the gears :

Pour le graissage périodique des pièces, utiliser une graisse de type EP2.

Periodically, lubricate the components : use a grease type EP2.

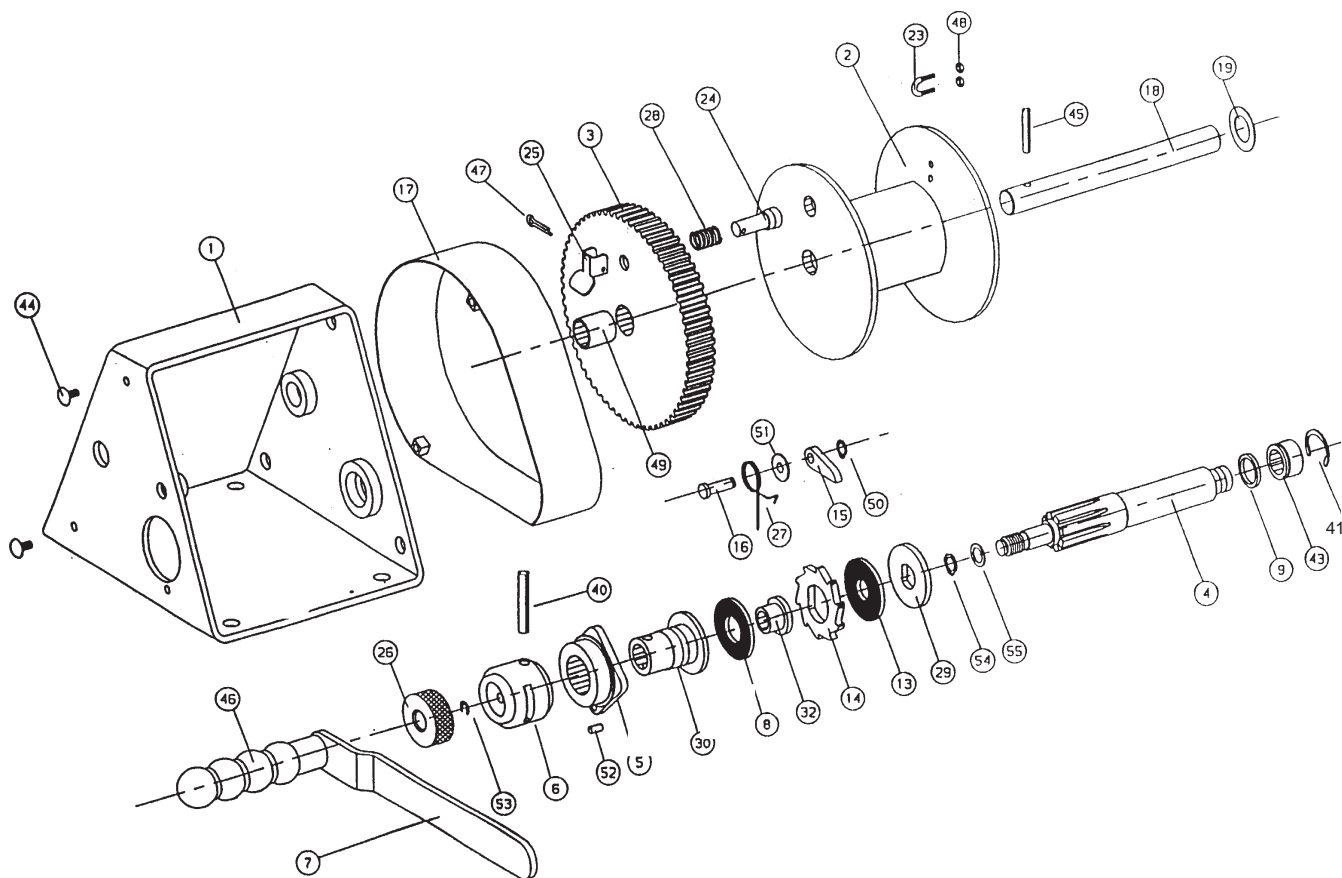


Carol TR 150



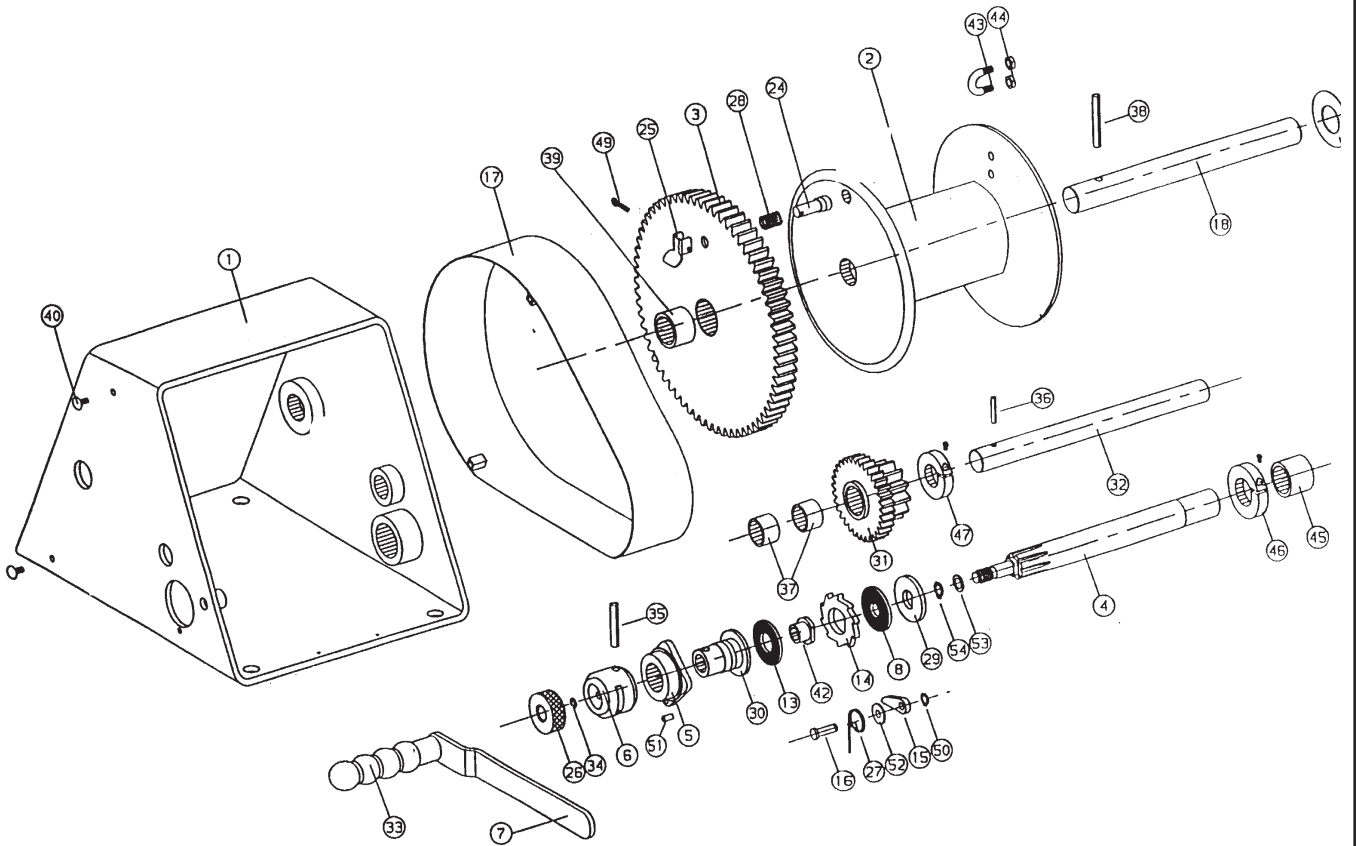
| Pos. | Réf. | Code TSA | Désignation | | Pos. | Réf. | Code TSA | Désignation | |
|------|-------|----------|----------------|---------------|------|-------|-----------|---------------------|------------------|
| 1 | 21601 | 1252001 | Châssis | Frame | 28 | 21628 | 1252028 | Ressort de débraya | Release spring |
| 2 | 21602 | 1252002 | Tambour | Drum | 29 | 21029 | 1252029 | Rondelle d'appui | Support washer |
| 4 | 21604 | 1252004 | Arbre | Shaft | 30 | 21630 | 1252030 | Ecrou de frein | Brake nut |
| 5 | 21005 | 1252005 | Palier avant | Front bearing | 31 | 21043 | 1252031 | Palier arrière | Rear bearing |
| 6 | 20006 | 1252006 | Tête maniv. | Crank head | 32 | 20040 | 043445301 | Goupille E8 x 50 | Pin E8 x 50 |
| 7 | 20107 | 1252007 | Manivelle | Operat. lever | 33 | 20042 | 1252033 | Vis ULS 6 x 16 | Screw ULS 6 x 16 |
| 8 | 21008 | 1252008 | Rondelle frein | Brake washer | 34 | 20045 | 0433036 | Rondelle L U 8 | Washer LU8 |
| 9 | 21009 | 1252009 | Cale | Packing | 35 | 13041 | 0433504 | Circlips E 8 | Snap ring E8 |
| 13 | 21013 | 1252013 | Rondelle frein | Brake washer | 36 | 3108 | 0437525 | Serre-câble ø4 | Wire rope clamp |
| 14 | 21014 | 1252014 | Rochet | Ratchet | 37 | 20049 | 1252037 | Poignée | Handle |
| 15 | 20015 | 1252015 | Cliquet | Catch | 38 | 13008 | 043200101 | Ecrou Hu 4 | Nut Hu 4 |
| 16 | 20016 | 1252016 | Axe | Spindle | 39 | 20052 | 0434303 | Goupille V 3,2 x 22 | Split pin |
| 17 | 21617 | 1252017 | Capot | Cover | 40 | 20147 | 0434641 | Goupille G 6 x 16 | Pin G6 x 16 |
| 18 | 21618 | 1252018 | Entretoise | Spacer | 41 | 21041 | 0433822 | Anneau 7103-28 | Ring 7103-28 |
| 24 | 21624 | 1252024 | Pion débray. | Release pin | 42 | 21032 | 1252042 | Bague | Sleeve |
| 25 | 20025 | 1252025 | Levier | Release lever | 43 | 20050 | 0433807 | Anneau 7133-7 | Ring 7133-7 |
| 26 | 20026 | 1252026 | Bouton | Lever knob | 44 | 21044 | 1252044 | Rondelle | Washer |
| 27 | 21627 | 1252027 | Ress.cliquet | Catch spring | 45 | 21045 | 0433508 | Circlips E 12 | Snap ring E12 |

Carol TR 300 - 500



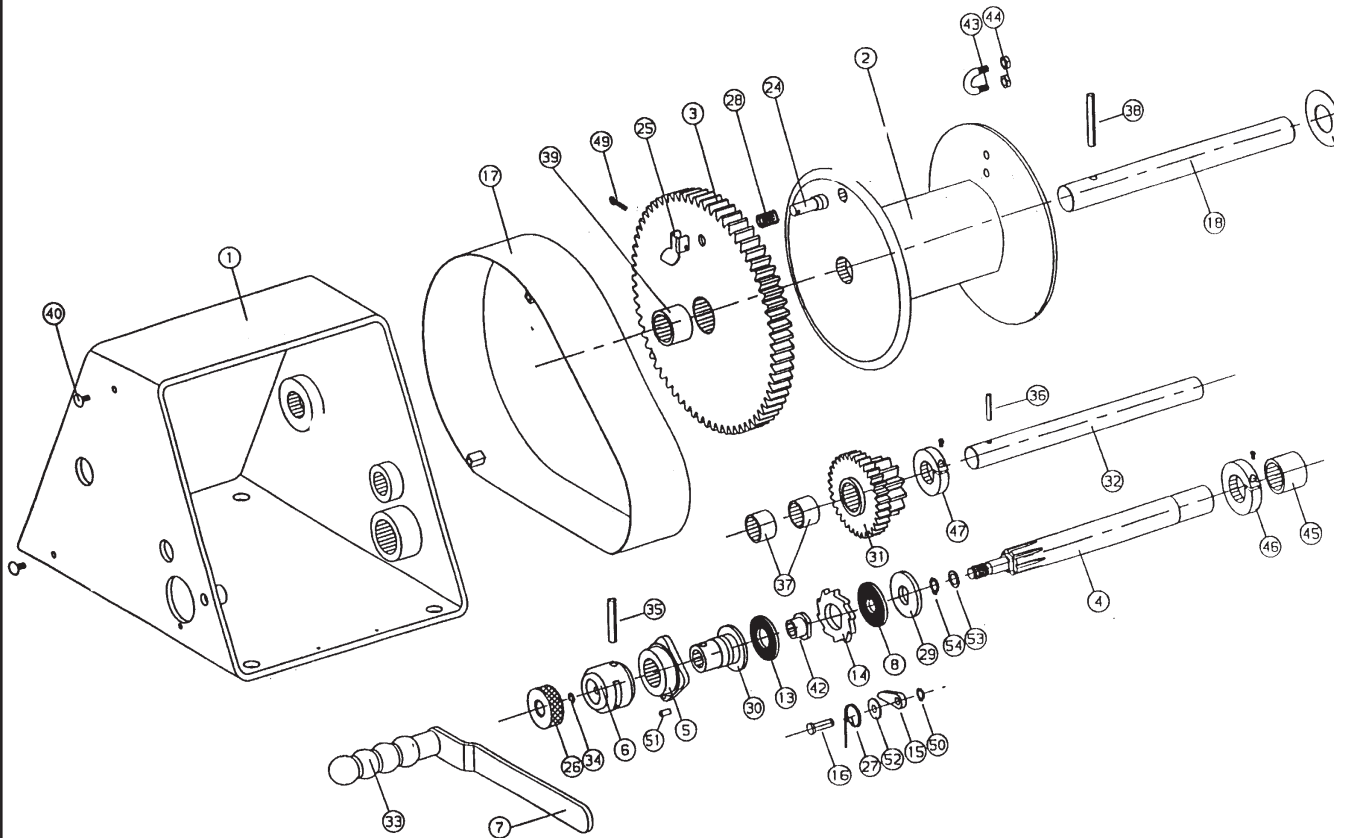
| Pos. | Réf. | Code TSA | Désignation | | Pos. | Réf. | Code TSA | Désignation | |
|------|-------|----------|-------------------|-----------------|------|-------|-----------|-------------------|----------------|
| 1 | 21001 | 1252101 | Châssis | Frame | 26 | 20026 | 1252026 | Bouton | Lever knob |
| 2 | 21002 | 1252102 | Tambour | Drum | 27 | 21027 | 1252127 | Ressort | Catch spring |
| 3 | 21503 | 1252003 | Roue 300 | Wheel 300 | 28 | 21028 | 1252128 | Ressort | Release spring |
| 3 | 21003 | 1252103 | Roue 500 | Wheel 500 | 29 | 21029 | 1252029 | Rondelle d'appui | Support washer |
| 4 | 21004 | 1252104 | Pignon arbré | Gear shaft | 30 | 21030 | 1252130 | Ecrou frein | Brake nut |
| 5 | 21005 | 1252005 | Palier avant | Front bearing | 32 | 21032 | 1252042 | Bague | Sleeve |
| 6 | 20006 | 1252006 | Tête de manivelle | Crank head | 40 | 20040 | 043445301 | Goupille E8x50 | Pin E8x50 |
| 7 | 20007 | 1252107 | Manivelle | Operating lever | 41 | 21041 | 0433822 | Anneau 7103-28 | Ring 7103-28 |
| 8 | 21008 | 1252008 | Rondelle frein | Brake washer | 43 | 21043 | 1252031 | Palier arrière | Rear bearing |
| 9 | 21009 | 1252009 | Cale | Packing | 44 | 20042 | 1252033 | Vis ULS 6x16 | Screw ULS |
| 13 | 21013 | 1252013 | Rondelle frein | Brake washer | 45 | 20046 | 043443301 | Goupille E6x35 | Pin E6x35 |
| 14 | 21014 | 1252014 | Rochet | Ratchet | 46 | 20049 | 1252037 | Poignée | Handle |
| 15 | 20015 | 1252015 | Cliquet | Catch | 47 | 20052 | 0434303 | Goupille V 3,2x22 | Split pin |
| 16 | 20016 | 1252016 | Axe | Spindle | 48 | 13008 | 043200101 | Ecrou Hu 4 | Nut Hu 4 |
| 17 | 21017 | 1252117 | Capot | Cover | 49 | 3024 | 1252049 | Bague BP 25 | Sleeve BP 25 |
| 18 | 20518 | 1252118 | Arbre | Shaft | 50 | 13041 | 0433504 | Circlips E8 | Snap ring E8 |
| 19 | 20019 | 1252119 | Cale | Packing | 51 | 20045 | 0433036 | Rondelle LU8 | Washer LU8 |
| 23 | 20023 | 0437524 | Serre-câble | W. rope clamp | 52 | 20147 | 0434641 | Goupille G6x16 | Pin G6x16 |
| 24 | 21024 | 1252124 | Pion | Release pin | 53 | 20050 | 0433807 | Anneau truaere ø7 | Ring 7133-7 |
| 25 | 20025 | 1252025 | Levier | Release lever | 54 | 21045 | 0433508 | Circlips E12 | Snap ring E12 |
| | | | | | 55 | 21044 | 1252044 | Rondelle | Washer |

Carol TR 1000



| Pos. | Réf. | Code TSA | Désignation | | Pos. | Réf. | Code TSA | Désignation | |
|------|-------|----------|-------------------|-----------------|------|-------|-----------|-------------------|---------------|
| 1 | 21101 | 1252201 | Châssis | Frame | 31 | 21131 | 1252231 | Pignon | Gear |
| 2 | 20102 | 1252202 | Tambour | Drum | 32 | 21132 | 1252232 | Arbre | Shaft |
| 3 | 21103 | 1252203 | Roue | Wheel | 33 | 20049 | 1252037 | Poignée | Handle |
| 4 | 21104 | 1252204 | Pignon arbré | Gear shaft | 34 | 20050 | 0433807 | Anneau 7133-7 | Ring 7133-7 |
| 5 | 21005 | 1252005 | Palier avant | Front bearing | 35 | 20040 | 043445301 | Goupille E8x50 | Pin E8x50 |
| 6 | 20006 | 1252006 | Tête de manivelle | Crank head | 36 | 13394 | 043443301 | Goupille E6x40 | Pin E6x40 |
| 7 | 20107 | 1252007 | Manivelle | Operating lever | 37 | 20048 | 1252237 | Bague BP 25 | Sleeve BP 25 |
| 8 | 21008 | 1252008 | Rondelle frein | Brake washer | 38 | 13416 | 0434469 | Goupille E8x60 | Pin E8x60 |
| 13 | 21013 | 1252013 | Rondelle frein | Brake washer | 39 | 3245 | 1252239 | Bague BP 25 | Sleeve BP 25 |
| 14 | 21014 | 1252014 | Rochet | Ratchet | 40 | 20042 | 1252033 | Vis ULS 6x16 | Screw ULS |
| 15 | 20015 | 1252015 | Cliquet | Catch | 42 | 21032 | 1252042 | Bague BP25 | Sleeve |
| 16 | 20016 | 1252016 | Axe | Spindle | 43 | 3181 | 0437521 | Serre-câble | W. rope clamp |
| 17 | 21117 | 1252217 | Capot | Cover | 44 | 13016 | 043200401 | Ecrou HM8 | Nut HM8 |
| 18 | 20118 | 1252218 | Arbre | Shaft | 45 | 21134 | 1252245 | Bague BP 25 | Sleeve |
| 19 | 20119 | 1252219 | Cale | Packing | 46 | 21151 | 1252246 | Bague d'arrêt | Stop sleeve |
| 24 | 21024 | 1252124 | Pion | Release pin | 47 | 21152 | 1252247 | Bague d'arrêt | Stop sleeve |
| 25 | 20025 | 1252025 | Levier | Release lever | 49 | 20052 | 0434303 | Goupille V 3,2x22 | Split pin |
| 26 | 20026 | 1252026 | Bouton | Lever knob | 50 | 13041 | 0433504 | Circlips E8 | Snap ring E8 |
| 27 | 21627 | 1252027 | Ressort | Catch spring | 51 | 20147 | 0434641 | Goupille G6x16 | Pin G6x16 |
| 28 | 20028 | 1252228 | Ressort | Release spring | 52 | 20045 | 0433036 | Rondelle LU8 | Washer LU8 |
| 29 | 21029 | 1252029 | Rondelle d'appui | Support washer | 53 | 21044 | 1252044 | Rondelle | Washer |
| 30 | 21630 | 1252030 | Ecrou frein | Brake nut | 54 | 21045 | 0433508 | Circlips E12 | Snap ring E12 |

Carol TR 2000



| Pos. | Réf. | Code TSA | Désignation | | Pos. | Réf. | Code TSA | Désignation | |
|------|-------|----------|-------------------|-----------------|------|-------|-----------|-------------------|---------------|
| 1 | 21301 | 1252301 | Châssis | Frame | 31 | 21331 | 1252331 | Pignon | Gear |
| 2 | 20302 | 1252302 | Tambour | Drum | 32 | 21332 | 1252332 | Arbre | Shaft |
| 3 | 21303 | 1252303 | Roue | Wheel | 33 | 20049 | 1252037 | Poignée | Handle |
| 4 | 21304 | 1252304 | Pignon arbré | Gear shaft | 34 | 20050 | 0433807 | Anneau 7133-7 | Ring 7133-7 |
| 5 | 21005 | 1252005 | Palier avant | Front bearing | 35 | 20040 | 043445301 | Goupille E8x50 | Pin E8x50 |
| 6 | 20006 | 1252006 | Tête de manivelle | Crank head | 36 | 13394 | 043443301 | Goupille E6x40 | Pin E6x40 |
| 7 | 20107 | 1252007 | Manivelle | Operating lever | 37 | 20048 | 1252237 | Bague BP 25 | Sleeve BP 25 |
| 8 | 21008 | 1252008 | Rondelle frein | Brake washer | 38 | 13416 | 0434469 | Goupille E8x60 | Pin E8x60 |
| 13 | 21013 | 1252013 | Rondelle frein | Brake washer | 39 | 20324 | 1252339 | Bague BP 25 | Sleeve |
| 14 | 21014 | 1252014 | Rochet | Ratchet | 40 | 20042 | 1252033 | Vis ULS 6x16 | Screw ULS |
| 15 | 20015 | 1252015 | Cliquet | Catch | 42 | 21032 | 1252042 | Bague | Sleeve |
| 16 | 20016 | 1252016 | Axe | Spindle | 43 | 3182 | 0437549 | Serre-câble | W. rope clamp |
| 17 | 21317 | 1252317 | Capot | Cover | 44 | 13016 | 043200401 | Ecrou HM8 | Nut HM8 |
| 18 | 21318 | 1252318 | Arbre | Shaft | 45 | 21334 | 1252345 | Bague BP 25 | Sleeve |
| 19 | 20319 | 1252319 | Cale | Packing | 46 | 21335 | 1252346 | Bague d'arrêt | Stop sleeve |
| 24 | 21024 | 1252124 | Pion | Release pin | 47 | 21152 | 1252247 | Bague d'arrêt | Stop sleeve |
| 25 | 20025 | 1252025 | Levier | Release lever | 49 | 20052 | 0434303 | Goupille V 3,2x22 | Split pin |
| 26 | 20026 | 1252026 | Bouton | Lever knob | 50 | 13041 | 0433504 | Circlips E8 | Snap ring E8 |
| 27 | 21627 | 1252027 | Ressort | Catch spring | 51 | 20147 | 0434641 | Goupille G6x16 | Pin G6x16 |
| 28 | 20028 | 1252228 | Ressort | Release spring | 52 | 20045 | 0433036 | Rondelle LU8 | Washer LU8 |
| 29 | 21029 | 1252029 | Rondelle d'appui | Support washer | 53 | 21044 | 1252044 | Rondelle | Washer |
| 30 | 21630 | 1252030 | Ecrou frein | Brake nut | 54 | 21045 | 0433508 | Circlips E12 | Snap ring E12 |

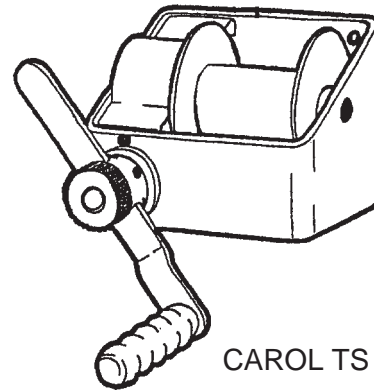
**AUTRES TREUILS A TAMBOUR CAROL :
OTHER CAROL WINCHES :**

Treuil manuel / Manual drum winches :

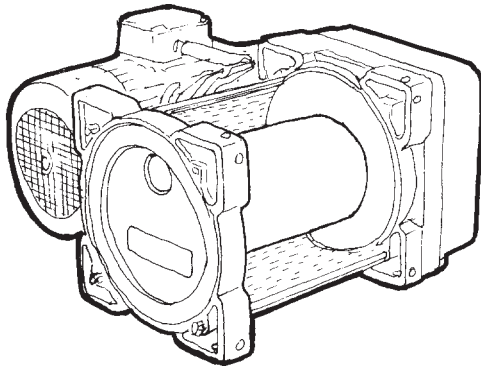
- Treuil à vis sans fin CAROL TS
Capacités : 250 kg à 3000 kg
- CAROL TS worm gear winches
Capacities : 250 kg to 3000 kg

Treuil à tambour motorisés / Powered drum winches :

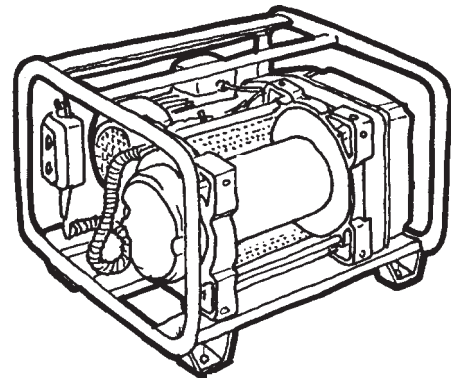
- Multi-positions de fixation
Capacités : 200 kg et 300 kg
- Multiple anchor positions
Capacities : 200 kg and 300 kg
- Treuil standards CAROL TE
- CAROL TE standard powered drum winches
- Treuil avec châssis CAROL TC (chantiers)
- CAROL TC powered drum winches mounted in frame
(for site operation)



CAROL TS



CAROL TE



CAROL TC

Les sociétés du Groupe TRACTEL et leurs revendeurs agréés vous fourniront sur demande leur documentation concernant la gamme des autres produits TRACTEL :

- appareils de levage et de traction,
- matériel d'accès de chantier et de façade,
- dispositifs de sécurité,
- indicateurs de charge électroniques,
- accessoires tels que poulies, crochets, élingues, ancrages, etc...

TRACTEL Group Companies and their agents and distributors will be pleased to supply on request illustrated documentation on the complete range of TRACTEL products :

- TIRFOR lifting and pulling machines,
- MINIFOR portable electric hoists,
- TIRAK powered mobile winches, and other lifting and handling equipment,
- access equipment for temporary and permanent work on facades and structures,
- BLOCSTOP safety devices,
- DYNAFOR electronic load indicators and DYNASAFE load monitoring and limiting devices, and,
- accessories, such as pulleys, ground anchors, hooks, slings, etc...